



PARTE DE MI

Strengthening rural-urban partnerships

Transnational
Cooperation project

WHO WE ARE



- Over **15 years of experience** in fostering regional development;
- **€13.2 million in funds** already allocated, with an additional €4.2 million for the 2023-2027 program
- **41 municipalities** actively involved in our initiatives;
- **762 km²** of landscapes covered;
- **4 completed cooperation projects**, delivering impactful results;

WHERE WE ARE

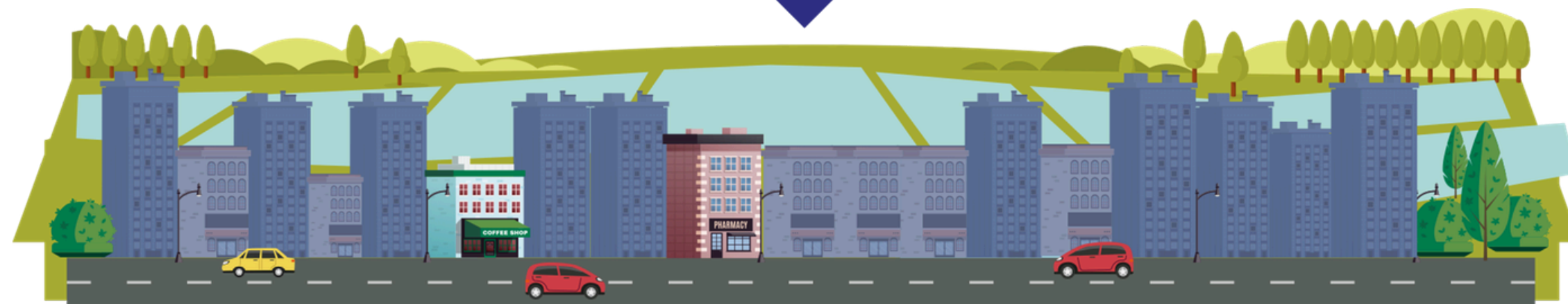


CONTEXT

Two cooperation projects on the link between rural and urban territories:

ORIZZONTI RURALI

Le nostre città, le loro aspettative, la nostra storia



2019-2022



2023-2024

WHY

- **Proximity to a major urban hub**

Located near the 3rd most populated city in the EU (Metropolitan City of Milan: 3.236 million people).

- **Unlocking hidden potential**

Rural areas, despite challenges, hold valuable yet often overlooked resources.

- **Collaboration over competition**

Fostering meaningful exchange leads to shared benefits.

CORE IDEA



Cities and rural areas express complementary needs

METROPOLIS NEEDS

- › History, memory, culture
- › Escape from urban chaos
- › Leisure and kind of peace
- › Experience of nearby territory
- › Beauty and nature
- › Authentic values and traditions



RURAL TERRITORY NEEDS

- Boost local economy
- Enhance production
- Increase tourist flow
- Strengthen services
- Share values and traditions



PROJECT OBJECTIVE



- Recover
- Stitch
- Strengthen



The relationship between the metropolis and the surrounding territories

MAIN GOALS

- **Analyze governance, organizational, and financing models** that facilitate joint initiatives between rural and urban/metropolitan areas.
- **Increase awareness** among national and European stakeholders about the strategic importance of fostering a mutually beneficial relationship between the countryside and the city.
- **Establish a foundation for collaborative actions by public and private actors** to effectively connect rural and urban/metropolitan areas within the initiative's territories.
- **Position “Parte de Mi” as a European best practice** within the European Network for Rural Development (ENRD).

HOW

- Highlight **successful cases** (reciprocity contracts)
- Map and analyze **legislation and governance** in each partner region;
- Map and analyze **local bodies and enhance their chance to interact** within the given legal framework and the stakeholder basis;
- Define **key success criteria** for effective partnerships;
- Design and implement **joint territorial actions**, in view of establishing a **management model** which may ensure the ongoing success and durability of the collaboration;

ACTIVITIES

Phase A1 - Analysis of best practices in Europe for joint activities and exchange services between rural and urban areas

- **Duration:** 6 months
- **Objective:** build a solid knowledge base on existing governance models and funding tools used to promote collaboration between rural and urban/metropolitan areas.
- **Key Activities with a Think-tank support:**
 - Study best practices in rural-urban collaboration, including contrats de réciprocité and similar models (with a planned study visit).

ACTIVITIES

Phase A2 - Analysis of administrative and regulatory instruments in Europe for funding joint activities between rural and urban areas

- **Duration:** 8 months
- **Objective:** identify cooperation mechanisms that match rural-urban relationship in our territories.
- **Key Activities with a Think-tank support:**
 - Analyze regulations and governance models at European, national, and regional levels.
 - Identify centers of competence and jurisdiction.
 - Identify and engage key stakeholders at different administrative levels.
 - Define success criteria for replicability in target territories.

ACTIVITIES

Phase B - Translate Phase A findings into concrete joint initiatives in partner territories.

- **Duration:** 2027
- **Objective:** support dialogue and collaboration among the various entities involved in "Parte de Mi" and facilitate the execution of specific actions in each territories in accordance with the project.
- **Key Activities with a Think Tank support:**
 - Design and refine territorial initiatives
 - Organize consultations and co-design workshops.
 - Implementation of local actions.

BUDGET

Activity	Total (€)	Notes
Phase A1 - A2 - B	€37.000,00	for each partner (considering 4 partners)
Analysis of administrative and regulatory tools and best practices in Europe for programming the financing of joint activities between rural and urban areas	€33.900,00	for each partner (considering 5 partners)
	€31.834,00	for each partner (considering 6 partners)
Communication	To be decided by each partner	Each partner will define their own budget for communication.
Organization of final event to present findings	around €20.000	Budget for organizing and hosting the final event.
Local actions	To be decided by each partner	Each partner will allocate funds for local actions.
Missions/Travels	around €4.000	Budget for 3 in-person meetings, with 2 participants per meeting for each LAG.



THE END

THANK YOU FOR YOUR ATTENTION



www.galrisorsalomellina.it



info@galrisorsalomellina.it